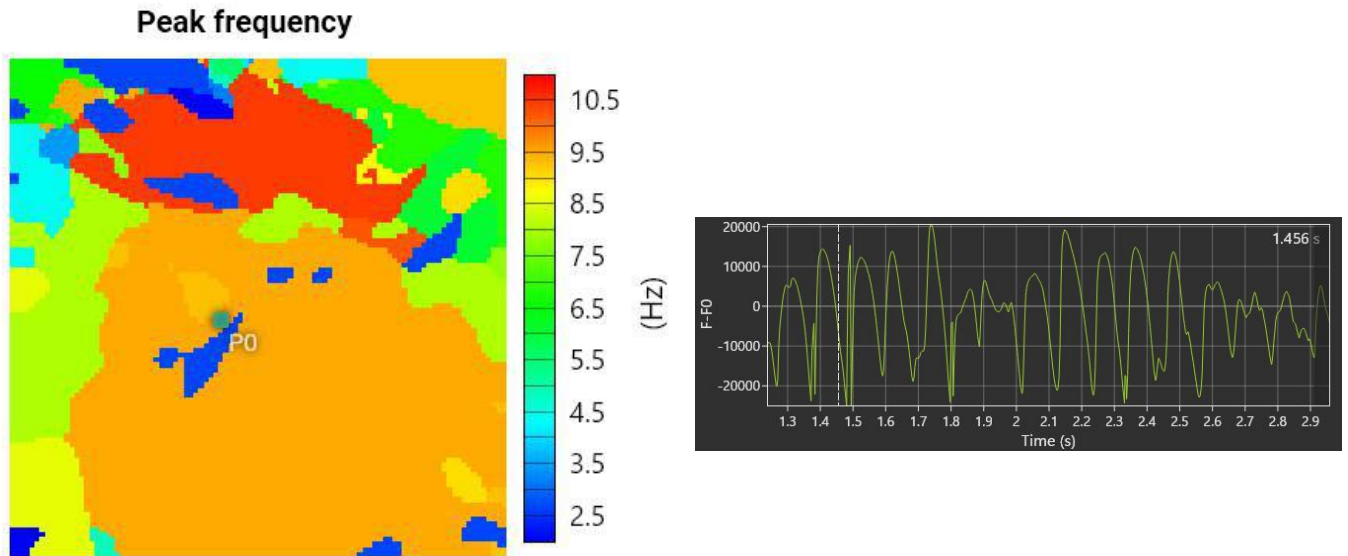
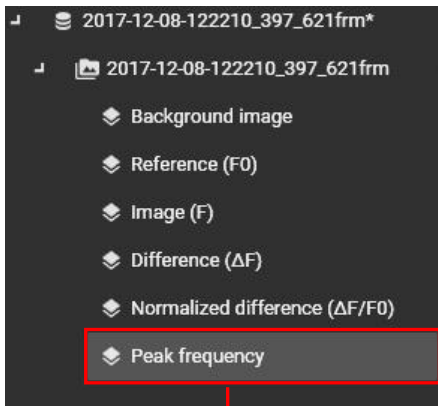


### 8-3-2. Peak frequency map analysis (add frequency analysis layer)

Select [Analyze]-[Add frequency analysis layer..] to display the following screen, which shows a map showing the maximum frequency (peak frequency) at each pixel.

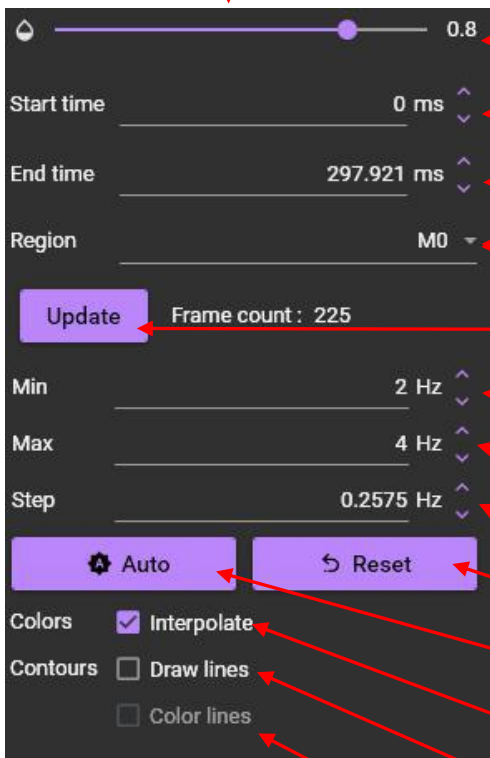


Operation	Description
Mouse over	Coordinates and frequency of that point are displayed in upper left of map.
Scroll mouse wheel	Zoom in/out map
Right click	Export data: Save numerical data (Frequency) in CSV file format.  Export figure: Save peak frequency map in image format (PNG/JPG/BMP).



Right click  
 Export data: Save numerical data (Frequency) in CSV file format  
 Rename: Change title

Clicking on Peak frequency will display the setting screen at the bottom left of the screen.



Specify transparency of layer. The lower it is, the more transparent the layer becomes.

Specifies start of time range of interest for frequency analysis

Specifies end of time range of interest for frequency analysis

Select target area for frequency analysis (all pixels, ROI, mask layer)

It becomes active when "Start time", "End time", and "Region" are changed.

Specify minimum frequency

Specify maximum frequency

Specify frequency interval when displaying frequencies in color

Reset settings to initial state

Automatic setting of optimum value

When turned on, the color display becomes gradation

Draw a line on frequency boundary

Draw colored borders on a black and white background image to display map